

THE HADLEY

THREE BEDROOM HOME



Individual plots may vary, please speak to the Sales Adviser



Discover an open-plan kitchen diner, family area ideal for entertaining and a utility room. On the opposite side of the home you will find a spacious lounge with French

doors onto the rear garden. Upstairs are two double bedrooms, the main with en-suite, plus a single bedroom and bathroom.

Features are plot specific. Please refer to working drawings.



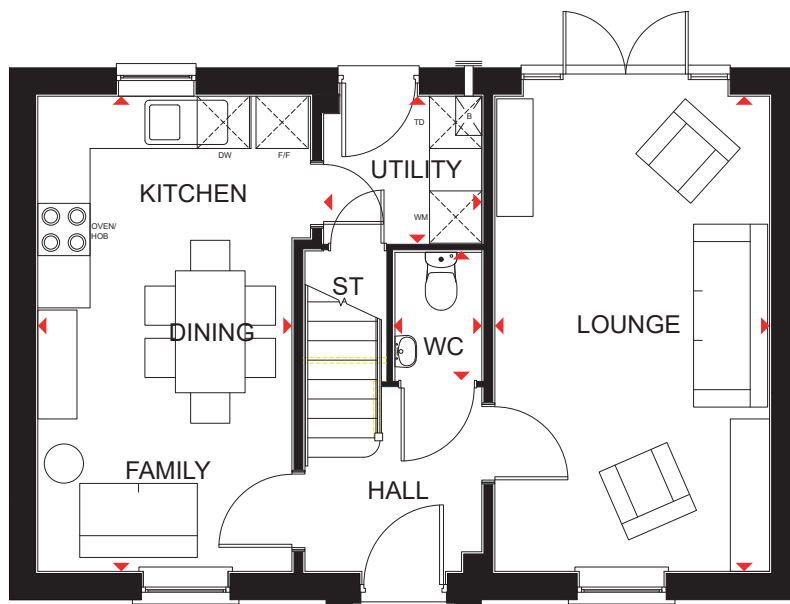
DAVID WILSON HOMES
WHERE QUALITY LIVES

THE HADLEY

THREE BEDROOM HOME

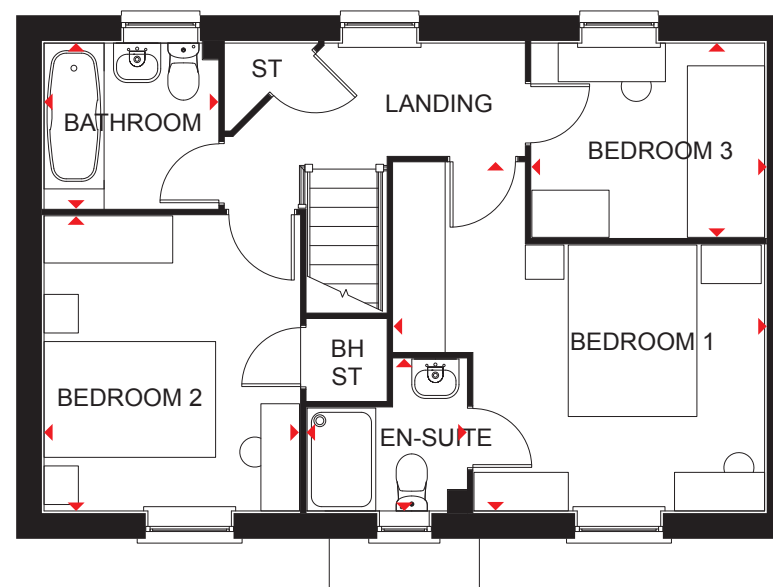
Key

B	Boiler	BH ST	Bulkhead store	f/f	Fridge/freezer space	td	Tumble dryer space
ST	Store	wm	Washing machine space	dw	Dishwasher space	◀▶	Dimension location



Ground Floor

Lounge	5455 x 3153 mm	17'11" x 10'4"
Kitchen/Family/Dining	5455 x 2917 mm	17'11" x 9'7"
Utility	1816 x 1687 mm	5'11" x 5'6"
WC	1485 x 1013 mm	4'10" x 3'4"



First Floor

Bedroom 1	4324 x 4058 mm	14'2" x 13'4"
En Suite	1856 x 1771 mm	6'1" x 5'9"
Bedroom 2	3441 x 2978 mm	11'3" x 9'9"
Bedroom 3	2713 x 2265 mm	8'11" x 7'5"
Bathroom	2025 x 1925 mm	6'8" x 6'4"

Plot 36.

We are on the New Homes Quality Code register of registered developers. "We" refers to the Barratt Developments PLC group brands including Barratt London, Barratt Homes and David Wilson Homes. All images used are for illustrative purposes. The images and the dimensions given are illustrative for this house type and individual properties may differ. Please check with your Sales Adviser in respect of individual properties. We give maximum dimensions within each room which includes areas of fixtures and fittings including fitted furniture. These dimensions should not be used for carpet or flooring sizes, appliance spaces or items of furniture. All images, photographs, dimensions and energy efficiency features depicted are not intended to be relied upon for, nor to form part of, any contract unless specifically incorporated in writing into the contract. BDW005089/AUG24

dwh.co.uk



DAVID WILSON HOMES

WHERE QUALITY LIVES